

Linkscope Typhoon™ Maritime Broadband

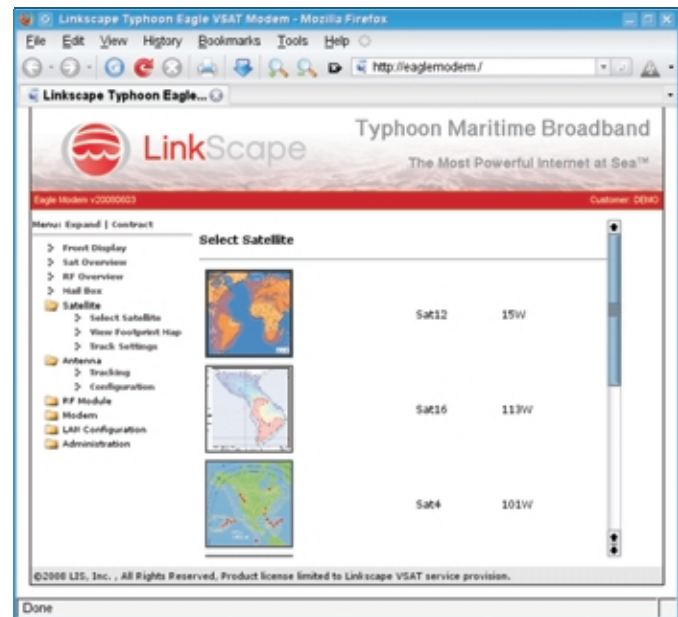
The Most Powerful Internet at Sea™

Typhoon Eagle VSAT Modem



Features

- Full integration with Linkscope and Seatel Tracking Controls
- Remote NOC Antenna Control
- Remote NOC LAN Monitoring and Problem Resolution
- Seamless Coverage Area Transitioning
- Fail-safe Configuration (option files) Stored 'On-Modem'
- 4 port Switching Hub
- Integrated Router and Firewall
- Front panel LCD Status and Control
- Configuration, Control, and Status via Webbrowser
- Compatible with the mature iDirect hub platform
- 19" Rackmountable 1U Case, 11" Deep
- Internal Power Supply
- Active Cooling Fans
- *Exclusively for use with Linkscope Typhoon VSAT service!*



Points of Contact

+954 678 9721
+310 494 9622
+44 207 183 0543
+39 069 926 8126

Fort Lauderdale, FL, USA
Malibu, CA, USA
London, UK
Rome, Italy



www.linkscape.net
vsatsales@linkscape.net